

Dover District Council

# Climate Change Strategy

January 2021



# Our vision

Delivering a better environment for everyone and helping to inspire individuals, businesses and other organisations to commit to act to reduce the district's carbon footprint.

## Contents

Forward from the Leader of the Council	3
Introduction & Purpose	4
The need for action	5
Purpose and remit of The Climate Change Member Working Group	6
Scope of the Strategy	7
The Green Thread – Interaction with the Corporate Plan and Corporate Interdependencies	8
Turning the Declaration into a Plan of Action;	9
Defining Problem	10
1. Emissions within DDC Control	11
2. Emissions within DDC Sphere of Influence, and emissions of Concern	12
How the Climate Change Strategy is actioned	13
1. Overview of Workstreams	14
2. Weaving 'the green thread' into Council business	15
3. Monitoring and reporting Progress	16
Appendix 1: Evidencing the Need for Action	17
Links to DDC Strategies, Policies, Plans and related websites	22



## Foreword

We are all having an impact on the environment, and it is a collective responsibility to tackle climate change. We all need to take positive action, and we need to do it now.

Dover District Council declared a climate change emergency in January 2020 and set about developing this strategy and action plan, overseen by a cross-party working group.

Our aim is simple: for Dover District Council to become a net zero carbon emitter by 2030 at the latest.

This involves looking at all aspects of the Council's work. From the way we heat our buildings, to our supply chain, and from how we travel in the district, to how we support local residents and businesses.

Because we also want to help you live and work more sustainably. We aspire for the whole district to be carbon neutral by 2050.

This will, of course, take time. But we now have a far greater understanding of the effects of human activity on the environment, and the technology, resources and shared commitment to tackle it.

The Climate Change Strategy sets out a vision for a cleaner, greener future.

**Cllr Trevor Bartlett**  
Leader of the Council

# Introduction & Purpose

The purpose of this strategy is to explain how the Council intends to step up to meet the challenge and turn the climate emergency declaration into a plan of action that will refocus the Council's activity, operations and spheres of influence to reduce emissions, increase sustainability and benefit the wider environment.

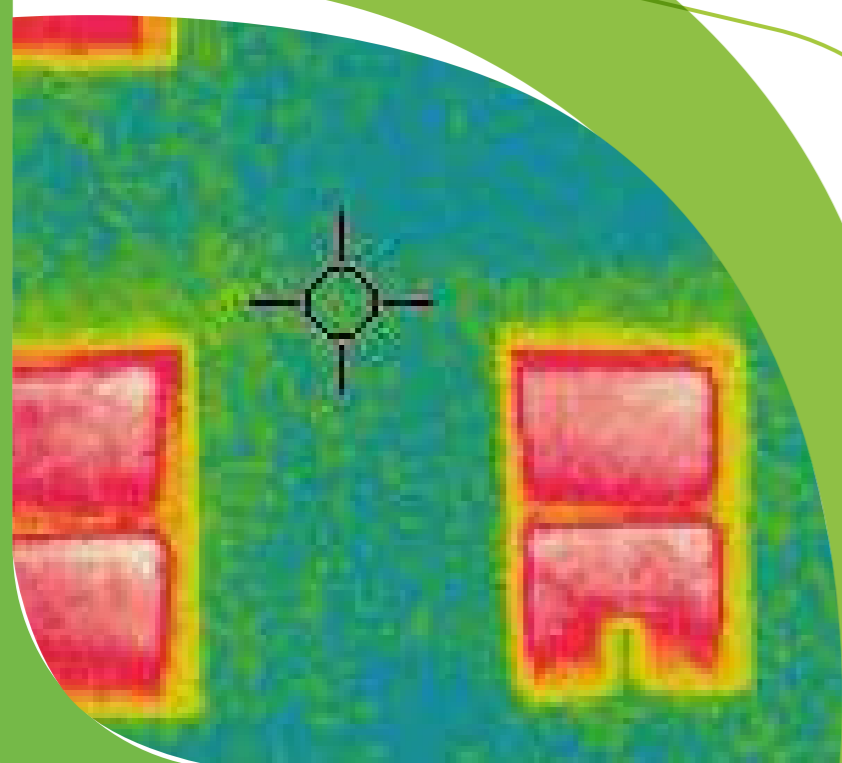
Dover District Council (DDC) has a long history of action to improve the environment of the district. Mitigating its impact on climate change, replacing its street lights with LED's, the new Dover Leisure Centre being built to BREAM very good rating (achieving highest energy efficiency rating Leisure Centre in Kent), ensuring Council new build/ refurbishment projects taking a fabric first approach to minimize heat loss, offering energy advice and grants to assist residents improve the thermal efficiency of their properties and achieve affordable warmth. Protecting and enhancing the environment through environmental improvement projects, including the chalk grassland management programme and the River Dour project managed by WCCP raising awareness of the importance of green and blue spaces involving residents to increase ownership of these valuable assets. Encouraging sustainability by taking action to continuously improve recycling rates, piloting a trial of solar p.v and battery storage to monitor the benefits of renewable energy (both in energy costs and demonstrate the effectiveness of 'green' energy sources). Measures are also being taken to increase the District's resilience to the unavoidable impacts of our changing climate through actions such as the recycling of shingle at Kingsdown to address the impact of Longshore Drift and the installation of rock groins to protect properties against rising sea levels. The above actions fall into two categories, those that are implemented once, and not repeated, and those where there is an ongoing need. In declaring a climate change emergency, the Council is acknowledging the need to build on existing action and the necessity of the change in gear required to meet the challenge of climate change.

Dover District Council has also supported International, National and Local initiatives relating to both the environment and our changing climate. Dover District Council is a signatory to the Kent Environment Strategy and Climate Local. It has collected data in relation to Greenhouse Gas Emissions and the Home Energy Conservation Act, even when collection of data was not mandatory. The Council was therefore in the fortunate position of having robust baseline data when the Council formally declared a Climate Emergency in January 2020, following the recommendation made by Cabinet in November 2019.

The purpose of this strategy is to explain how the Council intends to step up to meet the challenge and turn the climate emergency declaration into a plan of action that will refocus the Council's activity, operations and spheres of influence to reduce emissions, increase sustainability and benefit the wider environment. The strategy gives focus how the 2030 target of net zero for the Council's own estate, and the 2050 target for the wider district can be met, through mitigation (measures taken to reduce net emissions) and recognising the need to adapt to the inevitable changing climate. It also recognises the need to tackle the 2030 and 2050 target concurrently to achieve the wide ranging and challenging ambition in the relatively short timescale.

The measures taken in reaction to the Coronavirus pandemic has shown that we can pull out the stops and that we can make dramatic changes to our collective behaviour, resulting in reduction in emissions and improvements in air quality. In the context of the overall picture these benefits are relatively minimal but it's crucial that the impetus is not lost. It's important that the gains made are not lost in the recovery from Covid-19 lockdown. Indeed, any attempt to restart the economy in a "business as usual" scenario would be disastrous.

Whilst there will be a need to balance the additional pressures on Council resources, climate change waits for no one and the impacts continue to grow along with the need for urgent action. The Council's response to COVID 19 has demonstrated the unique role the Council has in leading on and coordinating action that makes sense locally and a workforce that can be deployed where needed and are flexible enough to adapt. These qualities can be used to ensure the 'green thread' of climate change is woven into all of the Council's recovery plans, strategies and projects and considered on a case by case basis to achieve local climate emergency ambition in support of the legally binding National targets.



# The need for action

The Stern Report of 2006 demonstrated that the cost of doing nothing to combat climate change far exceeded the modest cost of 1-2% of GDP in the UK, the opportunity for widescale restructuring of the economy and replacing old ways with new and how climate change is interwoven with social issues such as poverty. Professor Stern followed up this report with the book *Why Are We Waiting* (published around the time of COP 21 in Paris). One of the factors mentioned in the book is the need for better communication on the issue. In the last couple of years public knowledge/ perception has indeed increased, not least due to the actions of Greta Thunberg, about whom Sir David Attenborough said 'you have aroused the world. I'm very grateful to you'.

In May 2018 Greta Thunberg won a climate change essay competition, three months later she started to protest outside the Swedish Parliament, calling for a school strike for Climate. Her protests went viral leading to support from students around the world. Since then Greta Thunberg has become the leading voice on the crisis humanity faces arising from climate change, gaining international recognition and inspiring millions to join protests around the world and increasing public awareness on the subject, evidenced by recent surveys outlined below.

The full list of key documents, policies and perception surveys are appendix 1 to this strategy.



# The Climate Change Member Working Group: Purpose and Remit

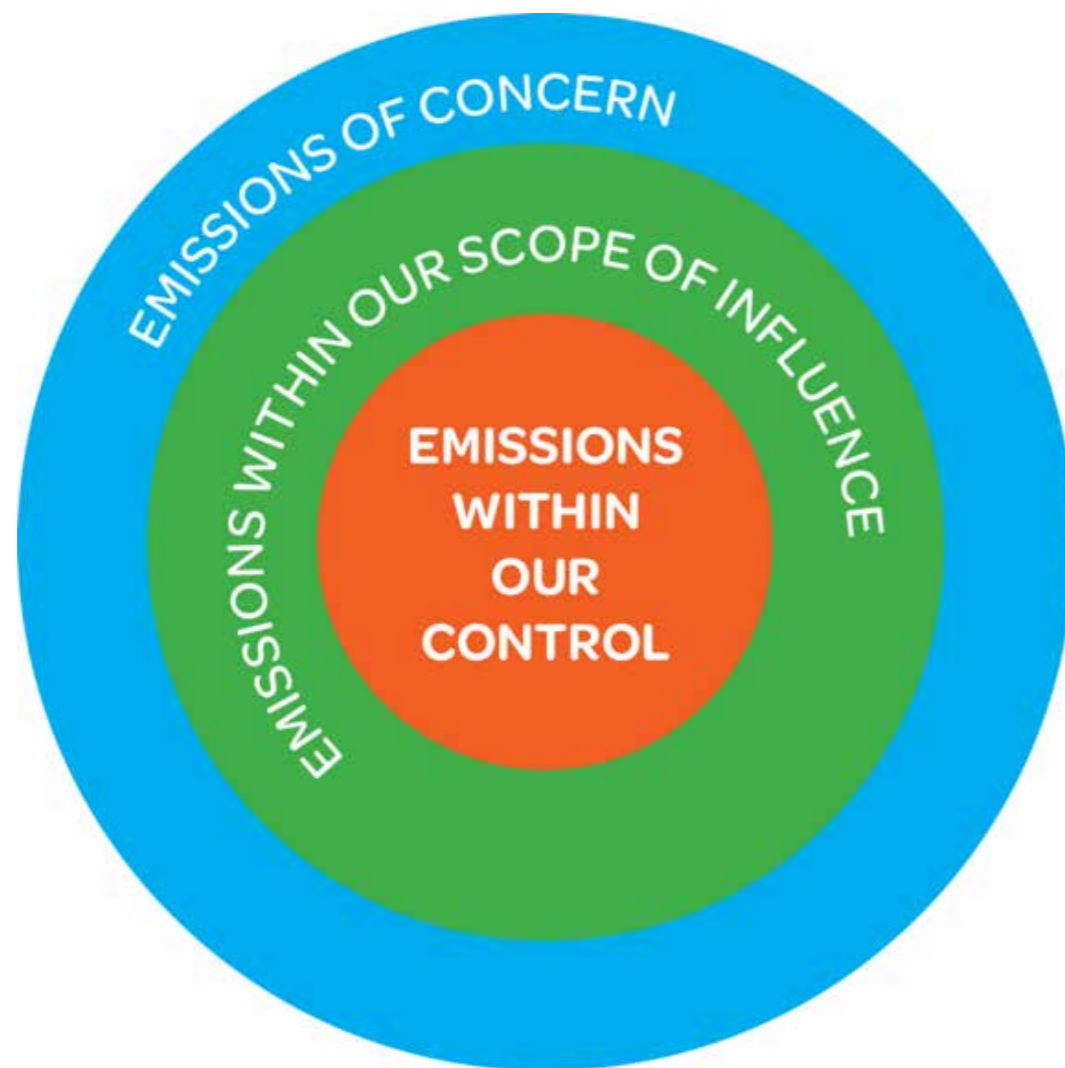
A cross party Climate Change Member Group was set up to explore issues associated with climate change, and currently meet every two months.

## The Working Group objectives are:

- To understand the opportunities in delivering and setting a Council wide net zero carbon emission target
- To identify the scope of and prepare, a costed Climate Change Strategy and Action Plan, setting out plans for Dover District Council to become a net zero carbon emitter by 2030 at the latest
- To identify resources required to implement the Strategy and Action Plan
- To set a regular (no less than annual) review and monitoring process.

# Scope of the Strategy

The Strategy recognises that the Council has different levels of control and influence, and indeed areas of concern regarding emission reduction, protection of the environment and meeting the challenges and opportunities of a changing climate.



This strategy also recognises the inter-relationship and interdependence with the wider areas of sustainability and environmental protection. Climate change, sustainability, and environmental action are not the same thing, but neither are they competing ideas. Sustainability cannot be achieved without dealing with climate change or environmental action. The solutions to climate change must be economically, socially and environmentally sustainable. It is also important to remember that it is necessary to take action to: -

- a) reduce the severity of climate change
- b) deal with the change that is now inevitable.

## The scope of the Strategy comprises:

- Consideration of ALL the Council's activity and operations (as detailed in the original Cabinet Report 4 November 2019), where it has control, areas which the Council can influence, and emissions of concern within Dover District
- The need to lead by example recognising and minimising the environmental impacts in discharging the Council's statutory functions, improving the health and wellbeing of our residents and contributing to the sustainable economic development of the district.
- The need to embed environmental sustainability into the effective and efficient running of Council services
- The evolving legal and statutory duties placed on the Council regarding the environment and the national response to climate change.

The Strategy provides a framework for the Council to action. The Strategy and underlying action plans will be living documents due to the complex, fluid and innovative nature of the climate change agenda and the measures that can be taken to address DDC emissions by 2030 and the district emissions by 2050.

# The Green Thread

## Interaction with the Corporate Plan and Corporate Interdependencies

The Council's Corporate Plan recognizes the inter-dependency between the services we deliver, and outlines how the Council will facilitate and deliver a stronger local economy, stimulate investment and encourage more people to visit whilst protecting the District's natural environment, rich heritage with renewed emphasis on addressing climate change and sustainability.

This Strategy coordinates the Council's 'GREEN THREAD' overall approach to the climate emergency, and actions in the underlying action plans will be incorporated and expanded throughout different departmental strategies and plans, ensuring these commitments work alongside other priorities including equality, health inequalities and social justice, thus ensuring the most vulnerable in the District are not adversely disadvantaged.

# Turning the Declaration into a Plan of Action



## Defining the Problem

Whilst climate change impacts and emissions know no boundaries, overarching emission figures attributed to the Dover district are provided by the Department for Business Energy and Industrial Strategy (BEIS – formerly DECC). These are detailed on the following pages and will provide both the baseline for and evidence of the progress towards the net zero carbon emission targets set by Dover District Council.

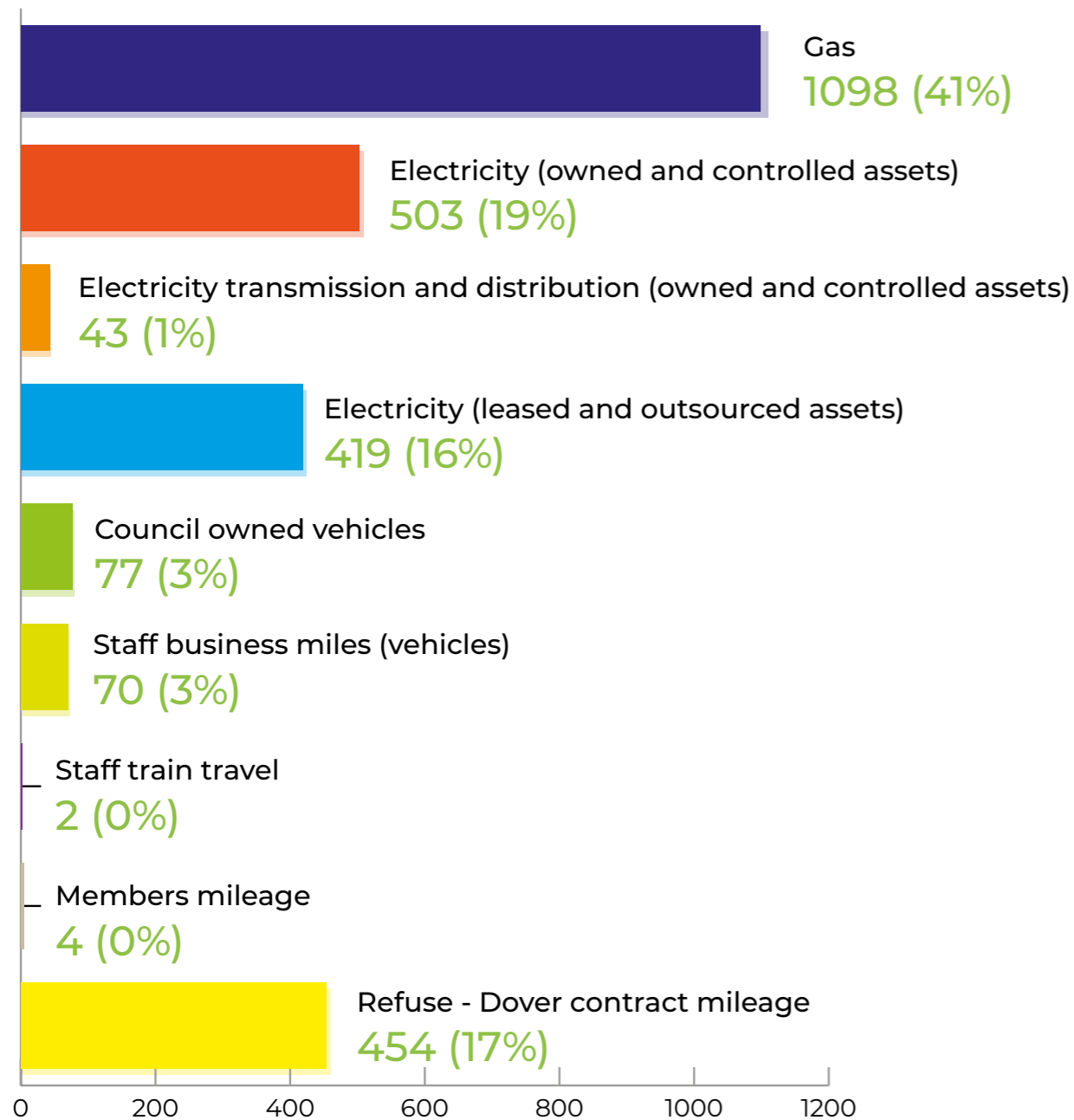
Energy consumption in buildings, and transport are significant emitters within the Council's estate and wider district as highlighted in the following charts, indicating areas that need the greatest attention. The extent of energy used in the domestic sector demonstrates the need for retrofit the existing housing stock, and the need to ensure future development minimizes energy consumption and reliance on fossil fuels.



## 1) Emissions within DDC Control

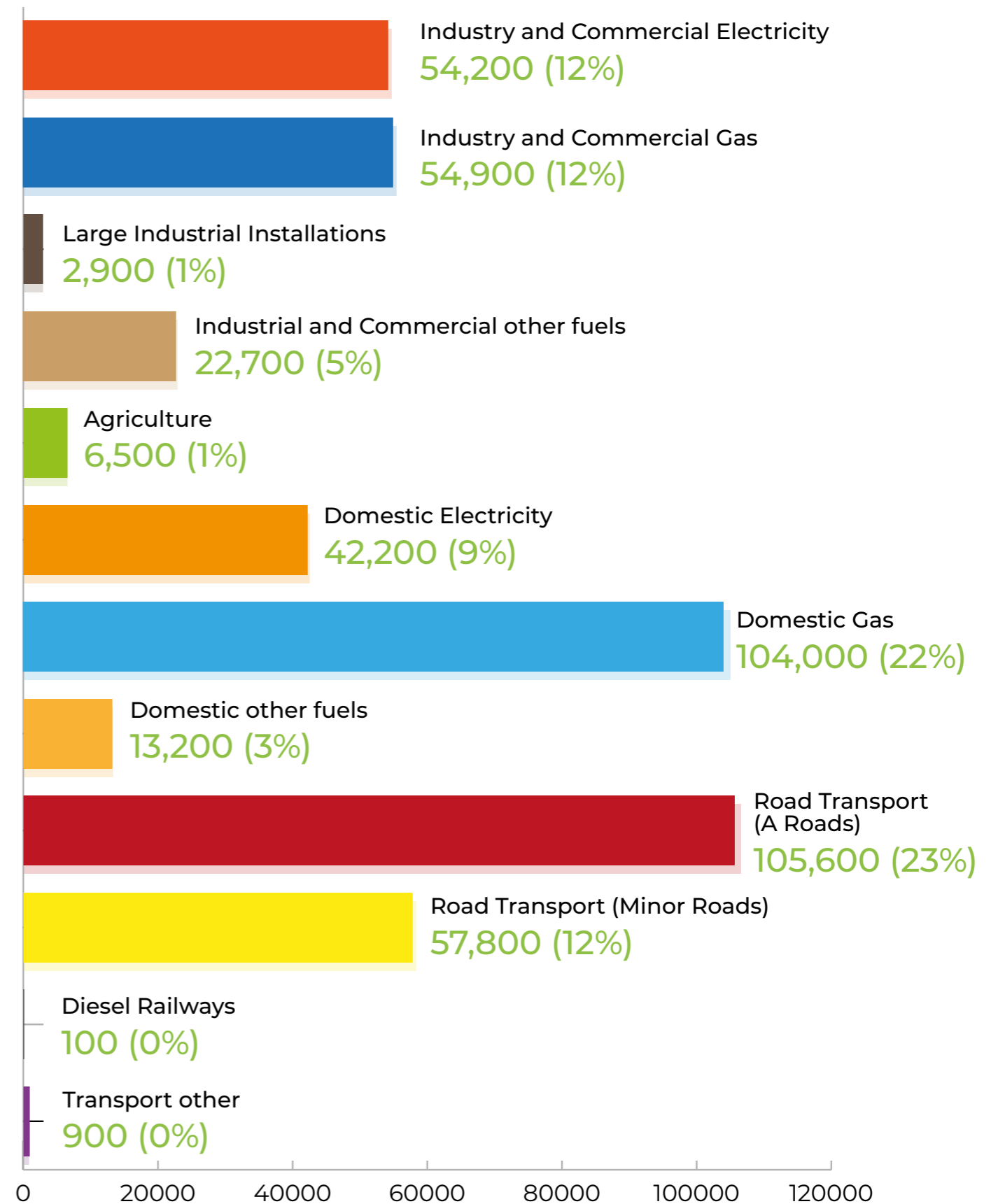
The Council reports annually on the emissions (Greenhouse Gas Emissions Report) that result from its own estate and functions and the most recent emissions are broken down in the chart below:

### Greenhouse Gas Emission 2018/19 tonnes of CO2



## 2) Emissions within DDC Sphere of Influence, and emissions of Concern

### Local Authority CO2 emissions 2018 tonnes of CO2



# How the Climate Change Strategy is actioned

## 1. Overview of Work Strands

The report to Cabinet in November 2019 outlined 8 themes that are equally relevant across emissions that are within the Council's control, influence or are of concern and are relevant to both inward looking and outward facing workstreams/ functions and actions that are carried by the different departments of the Council :-

- Assets & Estate
- Governance
- Natural Environment
- Air Quality
- Transport
- Housing
- Procurement
- Waste
- Local Development Plan

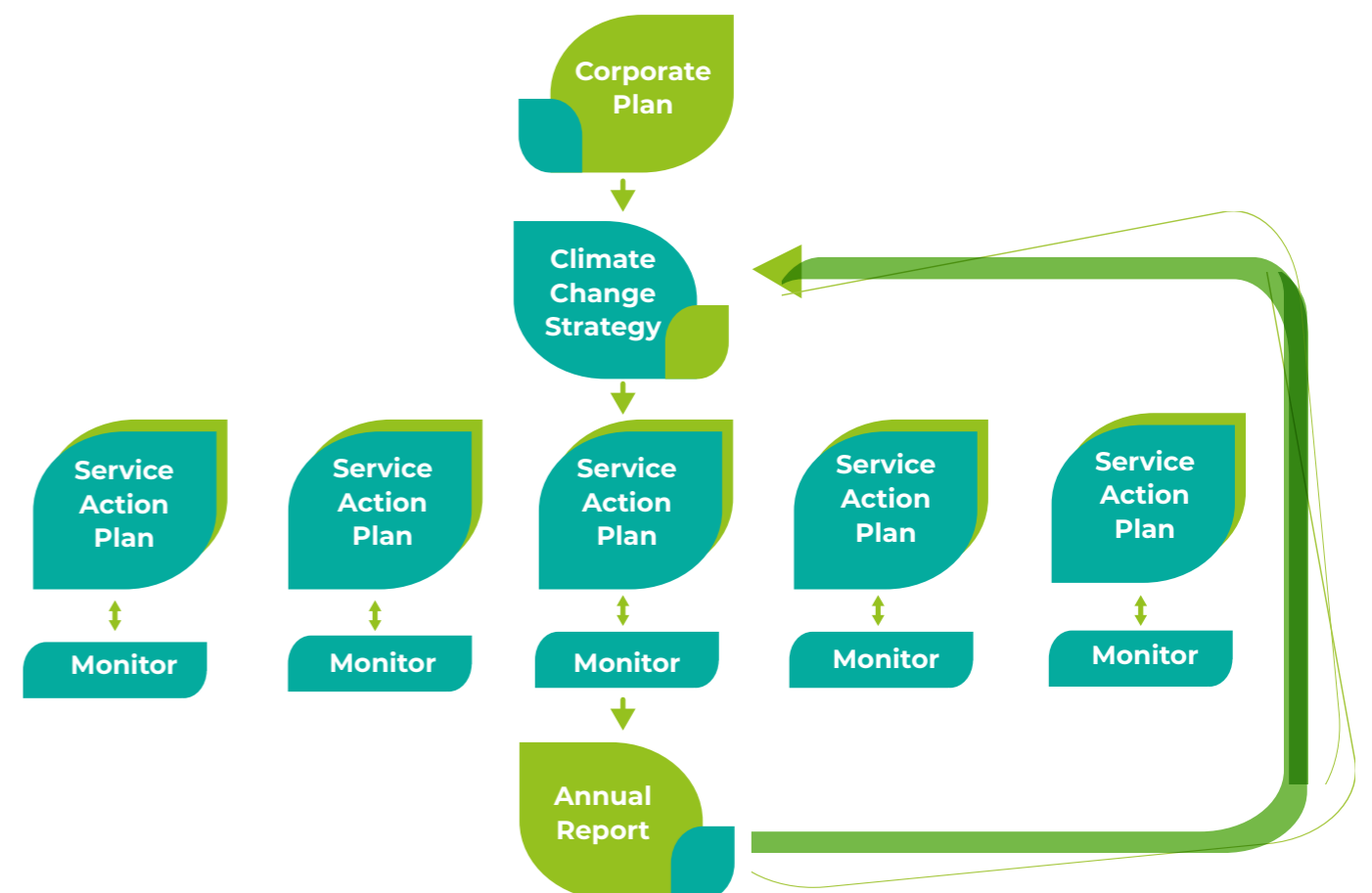


## 2. Weaving the 'green thread' into Council business

This strategy sets out the high-level ambition and will then need stimulate action in the different service areas across the Council. Overarching plans will be set out under the 3 emission themes (control, influence and concern) and form appendices to this strategy. Each service area will undertake action that falls within their remit and inter departmental collaboration where appropriate.

The importance of constant engagement and communication with the District's community cannot be underestimated in the successful delivery of this strategy and the action plans that will underpin it. Wider community involvement is critical in identifying and removing barriers that currently exist and to achieve buy-in, support, behaviour change and empowering communities to be part of building a better future for the district.

This strategy, and underlying action plans are living documents and will require review and revision to reflect the fast-moving nature of the agenda and ever evolving innovation.







### 3. Monitoring and reporting

Monitoring and reporting are essential to ensure that actions taken are effective and enable informed decisions to be made. Carbon emission metrics, measured against baseline data, are the tools used to highlight the effectiveness of action.

Each service area will be responsible for monitoring the success and impacts of their actions. Achievements and lessons learnt will inform future action/ action plans. Each service area will provide updated information to allow for calculation and collation of the overall picture of Council action into the relevant annual reports.

The Council currently reports progress through the following: -

#### **DDC Greenhouse Gas Emissions Report**

- this report, published annually, collates measured emissions data from various sources to demonstrate the total gross greenhouse gas emissions from the Council's own estate, operations and functions.

#### **The Home Energy Conservation Act (HECA) report**

has evolved from a fuel poverty focus only to include promotion of carbon reduction, renewable energy, energy efficiency in residential accommodation, how the Local Authority engages stakeholders (domestic consumers, business consumers and the green local supply chain).

The Council provides annual updates to Kent County Council to feed into the **Kent Environment Strategy** yearly Impact Report and Implementation Plan Progress Report. These reports highlight both mitigation and adaptation action taken to support economic growth whilst protecting and enhancing the natural and historic environment, creating and sustaining communities that are vibrant, healthy and resilient.

Savings through action taken in the areas of Influence and Concern will be collated at a District level and detailed in relevant reporting frameworks if applicable. Nationally published (Local Authority CO2 emissions – Full dataset) should also reflect the savings resulting from mitigation and adaptation measures taken in the District.

The above reports are published on the Council's website and climate change webpages will be updated to reflect action and celebrate successes across the District to inform and inspire others to take action.



# Appendix 1

## Evidence for action

There is local, national and international evidence that supports the need to act to improve, enhance and protect the environment.

Dover District Council (DDC) is striving with its long term commitment to 'Help the community minimise its carbon footprint, adapt to the changing climate and continue to improve recycling rates' and with its declaration of a 'climate change emergency' has also committed to become a carbon neutral district by 2050.

### The Economics of Climate Change: The Stern Review:

(October 2006) concluded that:

- there is still time to avoid the worst impacts of climate change, if we take strong action now;
- climate change could have very serious impacts on growth and development;
- the costs of stabilising the climate are significant but manageable; delay would be dangerous and much more costly;
- action on climate change is required across all countries, and it need not cap the aspirations for growth of rich or poor countries;

- a range of options exists to cut emissions; strong, deliberate policy action is required to motivate their take-up; and
- climate change demands an international response, based on a shared understanding of long-term goals and agreement on frameworks for action.

### Home Energy Conservation Act 1995

Statutory requirement for Local Authorities with a Housing responsibility to report on actions taken to reduce levels of fuel poverty through the improvement of energy efficiency of residential properties in the District. Annual reporting initially focussed on action taken by the Council to reduce levels of fuel poverty through improving the energy efficiency of properties, from 2013 reporting every other year, but requirements extended wider to encompass action taken by the Council to encourage renewable energy, promote sustainability.

### Climate Change Act 2008

This sets out legally binding greenhouse gas (GHG) emission reduction targets of at least 80% by 2050 against the 1990 baseline.

### Paris Agreement 2015

Requires countries to work together in limiting global temperature rise to below 2 degrees as recognised by the IPCC to limit the risks and impacts of climate change.

### 2030 Agenda for Sustainable Development (2015)

Sets out the 17 Sustainable Development Goals (SDGs) as it recognises the interconnection between economic development, social equity and inclusion. Governments are expected to translate the SDGs into national policy, plans and initiatives.

### 2016 Kent Fuel Poverty Strategy

The Council approved the Strategy, and committed to supporting the action plan, including the improving the thermal efficiency of properties occupied by residents living in fuel poverty, with consequential impact of reducing domestic emission and improving health of the District's residents.

### Clean Growth Strategy 2017

This Strategy underlines the role that local government has in delivering and supporting a low carbon society.

### 2018 Kent Environment Strategy Council

DDC committed to the Kent Environment Strategy to provide a basis for co-ordinated action across the County, approved in so far as it is consistent with this Council's Corporate priorities and to the extent that resources will allow.

### 2020 Emissions Reduction Pledge (2018)

Voluntary target and reporting framework to standardise reporting on emissions across Public Sector and wider. Annual requirement to provide information template

### UK Government 25-year Environment Plan 2018

Promotes the use and management of land in a sustainable manner, the enhancement and recovery of landscapes and the connection of people with the environment to promote health and wellbeing. It also promotes an increase in resource efficiency and a reduction in pollution and waste, securing a clean, productive and biologically diverse sea and ocean and protection and improvement of the global environment.

### Our Waste, Our Resources Strategy for England 2018

Sets out how the Government intends to preserve the stock of material resources by minimising waste, promoting resource efficiency and moving towards a circular economy and tackling waste crime. It is also their blueprint for eliminating avoidable plastic waste.

### Clean Air Strategy 2019

Outlines how the Government intends to tackle all forms of air pollution to ensure cleaner air to breathe and protecting nature whilst boosting the economy.

### State of Nature Report 2019

This Report pools the best available data on the UK's biodiversity, with a focus on the trends in species as the key evidence of how nature is faring. In addition to assessing the state of nature it also reviewed the pressures acting upon nature, and the conservation response being made to counter these pressures, in order to give a rounded view of the UK's nature in 2019.

### 2020 Climate Change Emergency

Dover District Council formerly declared (29 January 2020) DDC to become a net zero carbon emitter by 2030. Cabinet also pledged to help support the wider community so that the district can become carbon neutral by 2050.

### Wildlife & Countryside Act 1981

### Rights of Way Act 2000 (CRoW)

### Natural Environment & Rural

### Communities Act (NERC) 2006

### Kent County Council (Various)

### BEIS Public Attitudes Tracker (March 2020)

Published 7 May 2020 - covers public attitudes towards policies such as energy and climate change. 76% of the public said that they were either very concerned or fairly concerned about climate change. The proportion of people who had any awareness of 'Net Zero' was 35%. The level of support for renewable energy was 82% (solar 86%; off-shore wind 81%; wave and tidal 80%; on-shore wind 77% and biomass 68%)

YouGov opinion poll (28 May 2020) found clear support for putting the environment at the heart of the post-Covid19 recovery from across the UK.

### UK Public Opinion on Post-Covid 19 Economy and Environment

The UK public preferred a speech arguing for environmental prioritisation as part of post COVID-19 economic recovery measures, in comparison to a speech arguing that environmental prioritisation is now unaffordable because of COVID-19 related economic damage. Dr Kenward co-author of the study said: -

"That the population as a whole is positive [towards environment-friendly recovery policies] is further confirmation of earlier studies, but that this applies across demographics is new and unusual."

"Normally concern about the environment is more prominent in the middle classes. It seems there may be something about Covid-19 that is making environmental concern more universal."


"We can't yet be sure what that is, but possibly the experience of a new kind of national emergency makes other coming emergencies seem more real to more people."

### KES Perception Survey 2018

Kent residents responded that the primary challenges concern housing development, losing green belt land, litter & dog mess, traffic & congestion. 88% of residents claim to give a lot or a fair amount of thought to energy saving in their home. 11% struggle to pay energy bills (corresponds with levels of fuel poverty in the County/ District).

Whilst the full data and findings of this report are not yet known it is likely to address issues such as flooding as detailed below.

Flooding from high tides have in the past had significant consequences in North Deal, with February 1953 and January 1978 being the most significant flood events. However, more recently defenses were overtopped in Gazen Salts Recreation Ground and the Quay Sandwich as a result of a tidal surge, which involved evacuation from their homes for some residents and damage to several flood defenses. The Climate Change Risk and Impact Assessment for Kent and Medway highlights that sea level rise is like to increase by 0.8m which will bring additional pressures to existing sea defenses.



# Links to DDC strategies, policies, plans and related webpages

<https://www.dover.gov.uk/Corporate-Information/Corporate-Plan.aspx>

<https://www.dover.gov.uk/Planning/Planning-Policy-and-Regeneration/New-District-Local-Plan/Home.aspx>

<https://www.dover.gov.uk/Transport,-Streets--Parking/Parking/Documents--Policies/Home.aspx>

<https://www.dover.gov.uk/Environment/Environmental-Health/Air-Quality/Air-Quality-Monitoring.aspx>

<https://www.dover.gov.uk/Leisure-Culture-Tourism/Leisure-Facilities/PDF/Parks-and-Amenity-Open-Space-Strategy.pdf>

<https://www.dover.gov.uk/Environment/Coast--Rivers/Coast-Protection/Home.aspx>

<https://www.dover.gov.uk/Housing/Private-Sector-Housing/Private-Sector-Housing-Strategy.pdf>

<https://www.dover.gov.uk/Environment/Climate-Change/Home.aspx>

<https://www.dover.gov.uk/Environment/Energy-Advice/Energy-Advice.aspx>



## Appendix 2 Action Plan

Emissions within our Control					
Theme	Action	Responsibility	Timescale	Deliverability issues	Progress
<b>Theme 1 Assets &amp; Estate</b>			Short/ Medium/ Long term		
Cut energy consumption in all our buildings	Active energy monitoring	<b>Climate Change &amp; Energy Conservation</b>	S, M	Accurate knowledge of energy consumption essential in order to understand how to best to reduce need.	AMRs being installed across the whole estate to ensure realistic energy consumption figures (183% of meters are now smart meters). This enables accurate reporting of consumption/ emissions data.
	Better reporting	<b>Sustainability Champions</b>	S	Accessibility to billing information	Online reporting of meter reading enables easier collation of data for <a href="#">Greenhouse Gas Emission report</a> .  Annual Emissions now reported in the <a href="#">Council's Performance Report</a> (CC001) as well as being published on the

					website and report submitted to Government.
	Establish Energy Champions	<b>CMT</b>	<b>S</b>		Climate change e-learning to be instigated when new e-learning packages procured. Climate Change e-learning to become mandatory
	Switch it off/ energy saving behaviour staff campaigns	<b>Sustainability Champions supported by Climate Change</b>	<b>Ongoing</b>		Electricity consumption data at the Council Offices Whitfield has been lower in the last 3 years (Autumn) compared to Autumn 2019 (pre COVID). A reduction of:-  29,761.60 kWhs 2020  14,958.80 kWhs 2021  21,688.20 kWhs 2022  Increase in staff working remotely may account for some of these reductions.  Motion sensor lights installed in corridors and toilets at the Council Offices Whitfield.
Improve energy efficiency	Look at how low carbon solutions can	<b>Heads of Service</b>	<b>S, Ongoing</b>		2815 streetlights have been replaced with energy saving LED's within the district (projected 70-80% energy saving).

	<p>be integrated into all projects (LED lighting)</p>				<p>Motion Sensor lights installed in corridors and toilets of Council Offices, Whitfield</p> <p>Internal lighting upgraded to LED in sports pavilions, public conveniences, Grand Shaft, Deal Pier Office, and Dolphin House Communal Stairwell.</p> <p>Advertising screens on Council owned bus shelters powered down 20% of the day (between 12am and 5am) to save energy.</p> <p>Dover Town Hall refurbishment – electric ovens and hobs are being installed in the new kitchens reducing carbon emissions from catering equipment. Lighting is being upgraded to LED fittings and lamps throughout. The main venue is to have automatic lighting control system operation on presence/ absence detection which will realise additional energy and carbon savings.</p> <p><b>Dover Leisure Centre</b> – since April 2022 energy consumption reduced by 21%.</p> <ul style="list-style-type: none"> <li>• Sensor controlled lighting throughout the centre.</li> <li>• Car park lighting switched off at night.</li> <li>• Pools covered at night to reduce heat loss.</li> </ul>
--	---	--	--	--	---



					<ul style="list-style-type: none"> <li>• Aircon regulated to meet demands.</li> <li>• Unfortunately, solar panels on centre currently not operational to comply with insurance company recommendations, however remedial works due to complete by end of April 2023.</li> </ul> <p><b>Tides Leisure Centre</b> – since April 2022 energy consumption reduced by 9.1%.</p> <ul style="list-style-type: none"> <li>• Pool temperature reduced by 1 degree.</li> <li>• Isolated lighting in sports hall &amp; tennis centre to switch off court lights when not in use.</li> <li>• Aircon regulated to meet demands.</li> <li>• Defective/ failing lighting replaced with LED equivalent where feasible.</li> <li>• Investment in plant and remedial works on rectifying leaks in pool filtration pipework have been/ are being undertaken.</li> </ul>
	Decarbonise Heating provision	<b>Assets &amp; Building Control</b>	<b>M</b>	PSDS scheme could not be delivered in funding deadlines due to delays in equipment	Bronze Age Boat (housed at Dover Museum) – proposals being developed for the replacement of the existing climate controls system. Current

				delivery and requirement for additional electrical capacity needs and requirement for new substation.	scheme under consideration is to replace the current system which is reliant on gas boilers with a heat recovery air handling unit which will utilise a thermal wheel. Proposals also include upgraded Building Management System (BMS) which would increase efficient operation of the new system.
<b>Theme</b>	<b>Action</b>	<b>Responsibility</b>	<b>Timescale</b>	<b>Deliverability issues</b>	<b>Progress</b>
<b><i>Theme 1 Assets &amp; Estate</i></b>					
	Equipment (IT)	<b>Digital team</b>	<b>S</b>		Technology upgrades in the Council Chamber and throughout the Whitfield Offices are now enabling modern 'style' hybrid meetings and flexible working and reducing the need for commuting and business travel.
	Replacement of ineffective/ inefficient plant	<b>Heads of Service</b>	<b>M</b>		Gas being removed from the kitchens at Maison Dieu, Dover – being replaced with electric cookers. All

					<p>lighting in the building changing to LED.</p> <p>Study underway to look at viable options for replacing plant at the Dover Museum.</p> <p>Inefficient plant will be replaced at end of life with new cleaner technologies.</p>
Green Energy	Procure green gas and electricity	<b>Climate Change</b>	<b>S,M</b>	<p>'Green gas' is not widely available and continues to be expensive. The Government's recently published Energy Security Strategy will influence innovation in this field and energy production in the future</p>	<p>Aug 2020 – Estate electricity purchased through REGO (Green Energy) certificates. Gas contract reviewed August 2021, however still no viable 'green' market alternative.</p>
	Install renewable energy technologies	<b>Assets &amp; Building Control</b>	<b>Ongoing</b>		<p>65 x 37w (24kW) solar panels installed on 'new' Museum Store at Whitfield</p>

					<p>Since install (2019) the solar array on the Leisure Centre has generated 119.8MWh, saving 30,620.79kg CO2.</p> <p>Places Leisure investigating the feasibility of installing additional solar panels on Dover District Leisure Centre.</p>
<b>Theme 2 Housing</b>	<b>Action</b>	<b>Responsibility</b>	<b>Timescale</b>	<b>Deliverability issues</b>	<b>Progress</b>
Stock condition	Refresh survey of Council Housing Stock	<b>Assets &amp; Building Control</b>	S		<p>The HRA Business and Asset Management plan is to be updated to include provisions to upgrade wall and roof insulation, install solar pv where feasible and to install low carbon heating in the Council's Housing Stock</p> <p>EPC assessments are being carried out on all properties that either do not have a current EPC or expired EPC as part of the programme to ensure that all properties reach EPC C by 2035. As at the end of January 2022 Council Housing Stock EPC report shows: -</p> <ul style="list-style-type: none"> <li>• 80 – EPC B</li> </ul>

					<ul style="list-style-type: none"> <li>• 2234 – EPC C</li> <li>• 1921 – EPC D</li> <li>• 71 – EPC E</li> <li>• 9 – EPC F</li> <li>• 1 – EPC G</li> </ul> <p>3325 – properties have actual EPCs  991 – have cloned EPCs – based on similar property  12 – no EPC  35 – expired EPCs</p>
Retrofit	Insulate/ upgrade Council Housing Stock to EPC band C by 2030	<b>Assets &amp; Building Control</b>	<b>M, L</b>		Fabric first approach will be taken into account in all planned maintenance works.
Low Carbon	Look at low carbon solutions across Council Housing Stock	<b>Assets &amp; Building Control</b>	<b>S</b>		Fabric first approach to reduce the need for energy (in accordance with energy hierarchy) and maximise the benefit of low carbon solutions such as Heat Pumps.
	Ensure Council new build projects are low/ zero carbon	<b>Assets &amp; Building Control</b>	<b>S,M,L</b>		Developments at <a href="#">Kimberley Close and Stockdale Garden</a> to include solar pv arrays and improved insulation levels.  Cutting edge solar panel systems installed on the roof of accommodation built by the Council to

					<a href="#">provide interim housing for local people facing homelessness</a>  Royal Institution of Chartered Surveyors (RICS) awarded Bomford Place South East regional residential project winner. The affordable housing project is designed and built to a high standard using high performing materials. Most of the properties have double-aspect windows to make the most of natural light, along with high levels of insulation and natural ventilation to minimise the energy needed for heating and lighting. Residents also have access to some electric vehicle charging points and secure cycle racks.
<b>Theme 3 Governance</b>	<b>Action</b>	<b>Responsibility</b>	<b>Timescale</b>	<b>Deliverability issues</b>	<b>Progress</b>
Procedures	Insert Climate change 'green thread' across Council Strategies, Corporate Plan, MTFP, Service Plans, Capital Strategy + Local Plan	<b>Democratic Services and relevant Head of Service</b>	<b>S, ongoing</b>	Guidance for Officers on Climate change and Environmental Implications.	From January 2020 all cabinet reports include a Climate Change and Environmental implications section in Cabinet reports now a requirement.

				<p>Some projects will be limited due to type / location/ materials/budgetary factors.</p>	<p>Climate Change and sustainability issues are considered throughout the new <a href="#">Local Plan</a>.</p> <p>A <a href="#">Dover Green &amp; Blue Infrastructure Strategy: Evidence report</a> was commissioned. To take this report forward a Green Infrastructure Strategy is being prepared to support the policies and objectives of the new Dover District Local Plan and the Climate Change Action Plan.</p> <p>E-learning Climate change to be rolled out when new e-learning package is procured by DDC HR. Mandatory participation in Climate Change e-learning will help embed Climate Change action, and ensure Officers take their share of responsibility for implementing environmentally friendly policies, strategies, and action in their sections.</p> <p><a href="#">The Corporate Plan 2020-2024</a> ambition is to ‘maintain our District’s long-held place as the “Gateway to</p>
--	--	--	--	---	---

					<p>England” and protect our iconic natural environment and the rich heritage for which we are world renowned, with a renewed vigour on addressing climate change and sustainability.’ Priority Theme Three sets out the Corporate objectives: -</p> <ul style="list-style-type: none"><li>• Become a net zero carbon emitter by 2030.</li><li>• Focus on raising awareness, reducing emissions from our own activities and developing plans to reduce emissions across the District.</li><li>• Protect and enhance our assets and promote our rich heritage.</li><li>• Protect and enhance our environment for future generations.</li><li>• Reduce the waste we produce as a community through continued encouragement and investment in recycling.</li><li>• Ensure our parks and open spaces are vibrant, clean, easy to access and well-used and that our maintenance regime responds to the challenges posed by climate change, and the need to encourage biodiversity.</li></ul>
--	--	--	--	--	--



					<ul style="list-style-type: none"> <li>Protect public health and enhance the quality of the environment through a range of services including environmental health, port health, licensing and planning enforcement.</li> </ul> <p>The 'green thread' will also be taken forward through the development of the new Corporate Plan in 2023 and encourage Heads of Service to address the issue within their Service Plans.</p>
	Add Climate lens to all internal audits	<b>East Kent Audit Partnership</b>	<b>M, Ongoing</b>		Action for Head and Deputy Head of Audit – followed up on 02.12.22.
	Confirm support of Kent wide Strategies (Energy & Low Emissions Strategy, Kent Environment Strategy) and implement relevant actions at a local level	<b>Cabinet (adoption)</b> <b>Heads of Service (Implementation)</b>	<b>S</b>		<p>Report to Cabinet on 11 January 2021 Cabinet seeking commitment to support the Kent &amp; Medway Energy and Low Emissions Strategy. <a href="#">Cabinet agreed: -</a></p> <ul style="list-style-type: none"> <li>That the development of the Kent and Medway Energy and Low Emissions Strategy be welcomed as an excellent example of</li> </ul>

					<p>collaboration between councils across Kent.</p> <ul style="list-style-type: none"> <li>• That a commitment to meeting the objectives set out in the Kent and Medway Energy and Low Emissions Strategy and the underlying Implementation Plan in so far as it is consistent with this Council’s corporate priorities, and to the extent that resources will allow, be approved.</li> </ul> <p>DDC will continue to engage with KCC and all Kent Councils on County Wide collaborative action.</p>
<b>Theme 3 Governance</b>	<b>Action</b>	<b>Responsibility</b>	<b>Timescale</b>	<b>Deliverability issues</b>	<b>Progress</b>
	Increase resilience/ business continuity plans to prepare for the harmful consequences of our changing climate	<b>Heads of Service</b>	<b>S,M</b>		<p><a href="#">The Kent and Medway Climate Change Risk and Impact Assessment</a> describes the potential risks to society, economy and environment and is intended to inform policy and decision makers of the key climate risks.</p> <p><a href="#">Dover District Council Policy Statement on Flood and Coastal Defence</a> sets out</p>

					<p>the Council's approach to flood and coastal defence.</p> <p>The Council website provides <a href="#">advice for business and residents on how to prepare for flooding, how to report flooding and flood warnings, and links to help in the eventuality of a crisis.</a></p>
Procurement	Develop a sustainable procurement policy giving consideration to the carbon impacts of associated goods, works and services	<b>Procurement Manager</b>	<b>S</b>	Balance between commitment to achieve net-zero whilst, the Council being seen as a council easy to do business with, and economic factors.	Kent Procurement Subgroup drafting <a href="#">Kent Wide Market Position Statement</a> for endorsement by Local Authorities. Draft provided May 2022 for Management consideration.
	Specify environmentally friendly materials in tender documents	<b>Heads of Service Project Managers</b>	<b>S</b>	Balance between commitment to achieve net-zero whilst, the Council being seen as a council easy to do	Consideration given to reducing emissions and recycling/ reuse of materials where possible, for example demolition contractors required to set aside any undamaged materials such as bricks and slates for re-use and recycle the

				business with, and economic factors.	vast majority of the remaining material for-use as hardcore.
	Ensure the local authority supply chain is minimising carbon, ask the question how are you helping to meet district targets?	<b>Procurement Manager</b>	<b>S, M</b>		
	Strengthen green credential/ low carbon weighting in procurement scoring process	<b>Procurement Manager</b>	<b>S, M</b>	Balance between commitment to achieve net-zero whilst, the Council being seen as a council easy to do business with, and economic factors.	
Investment	Look at 'green' alternatives for Council Investment Strategy, i.e. renewable energy and energy storage. This represents a carbon reduction saving.	<b>CMT</b> <b>Property Investment Group</b> <b>Regeneration Team</b>	<b>S, M</b>		We continue to consider any opportunities that may arise including renewable energy and energy storage although government restrictions on the use of PWLB funds have placed some limits on the extent of such investment options.

	Ringfence funds for green initiatives	<b>Strategic Director (Resources)</b>	<b>S</b>	Jan 2023 - Given the current budget pressures this is not a realistic option at this time.	
<b>Theme 4</b> <b>Natural Environment</b>	<b>Action</b>	<b>Responsibility</b>	<b>Timescale</b>	<b>Deliverability issues</b>	<b>Progress</b>
Plan	Develop/ update plans to encourage nature-based solutions and sustain /enhance biodiversity	<b>Head of Commercial Services</b>	<b>S, M, L + very long</b>	Outcome of KCC Natural Solutions to Climate Change to provide steer for future action giving due consideration to mitigation and adaptation and promote a multiple benefits approach – not just carbon sequestration and/ or flood and water management but also benefit of biodiversity and society.	Green Infrastructure Strategy being developed to take forward the <a href="#">Dover Green &amp; Blue Infrastructure Strategy: Evidence report</a> .  New Local Plan being drafted to reflect CC and environmental National Legislation and Policies with the aim to ensure all development mitigates against and is built to adapt to the Changing Climate and to protect the environment balanced against housing need/viability considerations.  The Council’s website provides advice on <a href="#">crop burning</a> and <a href="#">crop spraying</a> to highlight the adverse environmental

					impacts if regulations are not followed and the Council's enforcement powers.
	Tree/ hedge planting projects within our control to improve carbon sequestration/ air quality	<b>Head of Commercial Services</b>	<b>S,M,L</b>		<p>As part of National Tree Week, the Council planted over 100 new trees across the district. The trees were provided through Eco Green Communities offsetting carbon from the manufacture of 25 eco dog waste bins installed in the district.</p> <p>14 trees gifted to the district by the Royal &amp; Ancient following the 149<sup>th</sup> Open (planted in Sandwich, BeChange community garden in Aylesham and Kearsney Parks, Dover).</p> <p>63 new fruit trees planted in Russell Gardens.</p> <p>To <a href="#">commemorate the Queens Jubilee</a> (70 years as Monarch) the Council has committed to plant 70 new trees in suitable sites across the district (focus</p>

					<p>on more heavily populated areas) - November 2022.</p> <p>Mixed native hedge and a beech hedge planted in Kearsney Abbey as part of the ongoing legacy of the National Lottery Heritage Fund Project</p>
	Maintain existing tree stock, biodiversity, soil and carbon capture rich landscapes	<b>Head of Commercial Services</b>	<b>S,M,L</b>		<p><a href="#">Trees and hedges within the district are protected by tree preservation orders and hedgerow removal</a> may require submission of Hedgerow Removal Notice. Information about maintaining trees and hedgerows can be found on the Council's website.</p>
	Consider Climate Change Risk Impact Assessment (CCRIA) in adaptation plans for Council environmental projects	<b>Head of Commercial Services</b>		Publication of Kent & Medway CCRIA	<p>The potential Climate Change impacts in the Dover District are in the <a href="#">Dover Green &amp; Blue Infrastructure Strategy: Evidence report</a> (referencing <a href="#">the Kent &amp; Medway Climate Change Risk Impact Assessment</a>) .</p>
	Rainwater harvesting from Council buildings	<b>Assets &amp; Building Control</b>	<b>M</b>		<p>No Council buildings currently harvest rainwater, and no projects underway/planned that include</p>

					rainwater harvesting from Council buildings.
Identify	Council land for woodland/ green corridors	<b>Head of Commercial Services Head of Assets &amp; Building Control</b>	<b>S,M,L</b>		<p>Kearsney Abbey and Russell Gardens was awarded the Green Flag Award<sup>®</sup> in 2021, key elements being enhancing wildlife habitats, such as opening up culverts to improve fish migration and spawning in Kearsney Abbey, re-planting the orchard in Russell Gardens and providing facilities for people to learn about parkland heritage and biodiversity. In 2022 Kearsney Abbey and Russell Gardens maintained its Green Flag status (international quality mark for parks and green spaces).</p> <p>The <a href="#">White Cliffs Countryside Partnership</a> was created to help conserve, enhance, and celebrate the special coast and countryside of Dover and Folkestone &amp; Hythe districts. It works to enhance land management for biodiversity and aims to increase resilience of local habitats and ecosystems. The sites that are</p>



					<p>managed include rare wildlife, <a href="#">walking</a> routes, <a href="#">cycling</a> trails and stretch all the way from Sandwich to Romney Marsh and Dungeness. You can take part in education activities for children (the <a href="#">Green Gang</a>) or join a conservation task to help care for these special local places.</p>
	<p>Develop re-wilding on Council land.</p>	<p><b>Head of Commercial Services Head of Assets &amp; Building Control</b></p>	<p><b>S,M,L</b></p>		<p>Samphire Hoe was created out of the Channel Tunnel spoil. The site was sown with a mix of 31 different species of wildflowers. Since opening to the public on 17 July 1997 the nature reserve now harbours 220 species of birds, 200 species of plants and 30 species of butterflies. The design of the education shelter incorporated eco-design and offers education and exhibition areas. In October 2021 the nature reserve was awarded its 16<sup>th</sup> Green Flag Award in recognition of the high environmental quality and contribution to local communities.</p>

					<p>Rangers from Samphire Hoe and the River Dour were featured in the Kate Humble's Coastal Walks TV Programme in April 2022 explaining the conservation work they undertake in the creation and maintenance of the nature reserve and the significant pure chalk stream. The pure chalk stream provides a rare habitat for flora and fauna, there being only two in Kent, and only 200 worldwide.</p> <p>DDC trialled no mow May at sites across the district in 2022.</p>
Maintain	Sea defences with rock groynes to reduce longshore drift and allow for efficient beach recycling	<b>Environment Agency/ Assets &amp; Building Control</b>	<b>M,L - ongoing</b>		<p><a href="#">Key works</a> costing at least £125,000 to help boost sea defences and continue to protect the area for the future were completed in the Summer of 2022 at St Margaret's Bay.</p>
	Prevent importation of pest, diseases and non-native species through the Port of Dover, and ensure	<b>Head of Regulatory Services</b>	<b>M,L</b>		<p><a href="#">The Dover Port Health Authority</a> provide enforcement, advice, support, training and consultation on food safety and infectious disease control issues both to the commercial and voluntary sector.</p>

	eradication of non-native species on council owned or council managed land	<b>Head of Commercial Services</b>			<p>The Dover Port Health Authority is also responsible for the control of infectious disease affecting passengers and crew on vessels that arrive in Dover (<a href="http://Maritime.dover.gov.uk">Maritime (dover.gov.uk)</a>).</p> <p>Information and advice about pests available at (<a href="http://Pest Control (dover.gov.uk)">Pest Control (dover.gov.uk)</a>),</p>
<b>Theme 5 Waste</b>	<b>Action</b>	<b>Responsibility</b>	<b>Timescale</b>	<b>Deliverability issues</b>	<b>Progress</b>
Reduce	Phase out single use plastics in Council Offices/ buildings/ functions (such as election counts)/ events	<b>Procurement Manager</b> <b>Heads of Service</b>	S		<p>Food, paper, and plastic recycling bins situated throughout the Council Offices, Whitfield.</p> <p>Elections are paper based events as no viable electronic options (some polling stations in mobile 'dead zones'.</p> <p>However, all paperwork and stationery that is in a suitable condition is reused (posters, signs, polling station paperwork, pens, pencils rulers etc).</p> <p>All non-statutory paperwork at polling stations has been removed. All non-confidential paper waste is recycled. Confidential paper including ballot</p>

					<p>papers are kept for 12 months and then destroyed in accordance with law. Equipment is only replaced when it is broken. The only 'single use' equipment are the finger thimbles used at the count.</p> <p>Queen's baton relay - Paper flags used for instead of plastic.</p>
	In-house campaign to reduce food waste at work	<b>Sustainability Champions</b>	<b>S</b>		Reduction in numbers of Officers working full time at the Whitfield Offices has resulted in less food waste from the main offices. Food waste collection bins are placed in all the kitchen areas. Information on what food put into the bins is clearly displayed in all kitchen areas.
	Paper usage with electronic alternatives	<b>Digital Team Sustainability Champions</b>	<b>S</b>	Recycling of printed paper	Home working through COVID 19 pandemic has significantly reduced office copying/ printing.33% reduction in printing from photocopiers Mar – May 2020 compared to Mar-May 2019.

					<p>The introduction of Teams has enabled document sharing and editing, reducing the need to print documents for meetings.</p> <p>Digital reviews and updates of legacy system to the cloud – enables business processes to be looked at to reduce manual paper-based processes.</p> <p>Approx half the amount of paper is used in the building since COVID19. Recycled paper is used whenever possible. The print section paper orders through EBB include offsetting through Carbon Footprint. Since March 2022 0.720tCO<sub>2</sub>e has been offset.</p> <p>The Council mainly uses digital forms of communication rather than paper and banners to promote events.</p>
<b>Theme 6 Air Quality</b>	<b>Action</b>	<b>Responsibility</b>	<b>Timescale</b>	<b>Deliverability issues</b>	<b>Progress</b>
Monitor	Monitor and review across the District – determine whether	<b>Regulatory Services</b>	<b>S</b>		December 2022 - Final draft of Dover District Council Air Quality Action Plan

	National AQ objectives met				internal consultation process being finalised.  <a href="#">Air Quality Monitoring in the Dover District</a>
	Define areas of poor air quality for action	<b>Regulatory Services</b>	<b>M/L</b>		<a href="#">Air Quality Management areas</a> are published on the Council's website, there are currently two in Dover for nitrogen dioxide. Particulates that are emitted from both road vehicles and the burning of solid fuel are monitored with the TEOM instrument in Townwall St (whereas the diffusion tubes measure nitrogen dioxide). Results from particulate monitoring do not indicate that levels in our district are breaching national AQ Objectives.
Implement	Pro-active measures that DDC can take to reduce negative impact on air quality	<b>Regulatory Services</b>	<b>M/L</b>		Technology upgrades in the Council Chamber and throughout the Whitfield Offices are now enabling modern 'style' hybrid meetings and flexible working and reducing the need for commuting and business travel.

					<p>Information on air pollution and air quality and the damage caused by pollutants are contained in <a href="https://www.dover.gov.uk/air-quality">Air Quality (dover.gov.uk) webpage</a>.</p> <p>DDC Promote <a href="https://www.dover.gov.uk/clean-air-day">Clean Air Day (dover.gov.uk)</a> annually in June with information about what residents can do to cut down air pollution and how the Authorities across the County work together to meet their legal duties and take action to address areas of poor air quality</p>
<b>Theme 7 Local Development Plan</b>	<b>Action</b>	<b>Responsibility</b>	<b>Timescale</b>	<b>Deliverability issues</b>	<b>Progress</b>
Local Plan	Introduce Climate Change chapter into new Local Plan	<b>Head of Planning</b>	<b>S</b>	Subject to consultation and independent examination	Agreed at Cabinet 07.12.20 for consultation in January 2021
	Identify areas suitable for renewable energy, biodiversity + tree enhancement + rewilding, new walking / cycling routes		<b>S-M</b>	Outcome of Local Plan consultation may well bring sites forward for renewable energy.	The preferred option in the revised Local Plan (currently being finalised) is to have a supportive policy on renewable energy rather being

	+infrastructure in the Local Plan				<p>prescriptive and identifying specific sites (DM Policy 3).</p> <p>News and updates about the Local Plan can be found at <a href="http://www.doverdistrictplan.co.uk">www.doverdistrictplan.co.uk</a></p> <p>Updated Green Infrastructure Strategy being developed</p>
	Green thread' of climate action throughout Local Plan	<b>Head of Planning</b>	<b>S</b>		<p><b>Draft Local Plan Climate Change chapter includes: -</b></p> <ul style="list-style-type: none"> <li>• Strategic Policy 1 – planning for climate change.</li> <li>• DM Policy 1 – Reducing Carbon Emissions</li> <li>• DM Policy 2 – Sustainable Design and Construction</li> <li>• DM Policy 3 – Renewable and Low Carbon Energy</li> <li>• DM Policy 4 – Sustainable Travel (inc. EV charging infrastructure)</li> <li>• DM Policy 5 – Water Efficiency</li> <li>• DM Policy 6 – Flood Risk</li> <li>• DM Policy 7 – Surface Water Management</li> <li>• DM Policy 8 – Coastal Change Management Areas</li> </ul>



					<p><b>Cross referencing to other policies assists with the ‘green thread’.</b></p> <ul style="list-style-type: none"> <li>• Strategic Policy 2 – Housing growth – locating development in accessible locations.</li> <li>• Strategic Policy 17 – Green Infrastructure and Biodiversity</li> <li>• DM Policy 21 – Homeworking</li> <li>• DM Policy 29 – Highways network and Highway safety (travel plan requirements)</li> <li>• DM Policy 30 – Parking</li> <li>• DM Policy 31 – Providing Open Space</li> <li>• DM Policy 33 – Protection of Open Space</li> <li>• DM Policy 35 – Digital Technology</li> <li>• DM Policy 37 – Quality Residential Accommodation (space for homeworking)</li> <li>• DM Policy 38 – Biodiversity Net Gain</li> <li>• DM Policy 41 – Air Quality</li> <li>• DM Policy 42 – Water Supply and Quality</li> </ul>
<b>Theme 8 Transport</b>	<b>Action</b>	<b>Responsibility</b>	<b>Timescale</b>	<b>Deliverability issues</b>	<b>Progress</b>

Staff travel	Mobile working – less travel to the office	<b>CMT</b>	<b>S,M</b>	Build on COVID 19 working practices	The provision of handheld devices to sections (i.e., Building Control) has reduced the need to visit the Council Offices to log/ report jobs.
Staff travel	Use alternative meeting options (telephone/ digital meetings)	<b>Digital Team</b>	<b>S</b>	Build on COVID shift to digital meetings and reducing need to travel for business meetings.	<p>The ability to meet via TEAMS and the improvement in equipment in the Council Chamber and across the Whitfield Offices has enabled hybrid meetings to take place and flexible working which has resulted in less need for travel.</p> <p>2020 Business travel shows a reduction of 34.55 tonnes of CO<sub>2</sub>e compared to 2019.</p> <p>2021 Business travel shows an increase of 5.51 tonnes of CO<sub>2</sub>e compared to 2020.</p> <p>2021 Business travel shows a reduction of 29.04 tonnes of CO<sub>2</sub>e compared to 2019.</p> <p>Salary Sacrifice Low Emission Car Scheme introduced on 30 March 2022. Since launch 7 employees have taken</p>

					<p>advantage of the scheme. The scheme provides staff of all grades (subject to qualifying criteria) access to new 'eco-friendly' electric or hybrid cars.</p> <p>The Council also offers a Cycle to Work Scheme, encouraging active travel options for employees.</p>
Fleet	Change to hybrid/ electric vehicles where feasible.	<b>CMT</b> <b>Heads of Service</b>	<b>M</b>		<p>EV pool car managed by Community Team</p> <p>Civic car is fully electric, and the 2 Environmental Protection team vans are electric.</p> <p>Alternative viable solutions for fleet vehicles (including commercial vehicles) are considered when they are replaced.</p>
EV charging	Provide EV charging points in Council car parks <b>cycle + car</b>	<b>Assets &amp; Building Control</b> <b>Parking Services</b> <b>Climate Change</b>	<b>S</b>	<p>Success of OLEV fund/ match funding from DDC funds</p> <p>Participation in Kent EV Charger Network</p>	<p>DDC succeeded in OLEV funding bid for ev charging points. There are a total of 53 units currently available across Dover, Deal and Sandwich. Usage is monitored and the CCPAG updated on a quarterly basis.</p>

				<p>KCC grant to Town/ Parish Councils to install EV charging points</p>	<p>Parking Strategy being developed that will allow the Council to deliver the infrastructure needed in the right locations.</p> <p>8 electric charging points on the Council's estate for fleet use only.</p> <ul style="list-style-type: none"> <li>• A single 7KW 32A fast charger in Tides Care Park</li> <li>• A single 7KW 32A fast charger in the rear car park at Whitfield on the end of the garages</li> <li>• Six single 7KW 32A fast charger in the middle car park at Whitfield</li> </ul> <p>Consideration being given to increase the numbers of ev charging points at the Council Offices for public use.</p>
	<p>Consider provision of EV charging points cycle + car in Council build projects</p>	<p><b>Head of Assets &amp; Building Control</b></p>	<p><b>S</b></p>		<p>7 ev charging points are currently being installed at Napchester Road development (Whitfield) and infrastructure for 2 ev chargepoints is being installed in the Council build project at Foxborough Close (Woodnesborough). 12 ev charging points have been installed in the</p>

					private market sales development that the Council has built (3 at Burgess Place and 9 at Castellum Mews – Dover). A further 2 ev charging points (accessible to the public) have been installed in car parking spaces adjacent to Bomford Place development (Dover)
--	--	--	--	--	---

Emissions Within our Influence					
Theme	Action	Responsibility	Timescale	Deliverability issues	Progress
<i>Theme 1 Assets &amp; Estate</i>					

Audit	Undertake asset audit to evaluate efficiency of each building type, to ascertain possible improvements, cost/ carbon implications and budget	<b>Head of Assets &amp; Building Control</b>		Poor data information from East Kent Housing could delay implementation of improvements in Council Housing Stock	EPC Surveys of all DDC commercially let buildings are close to completion (deadline April 2023). Outcome will inform decision as to which buildings require upgrades.
Demonstrate	The benefits of the natural environment through schemes/ projects on Council land	<b>Head of Assets &amp; Building Control</b>			Green Infrastructure Strategy being developed to take forward the <a href="#">Dover Green &amp; Blue Infrastructure Strategy: Evidence report</a> will help inform decision making.  Parks & Open Spaces and <a href="#">White Cliffs Countryside Partnership projects</a> / works demonstrate the benefits of the natural environment on Council land and across the wider district.
<b>Theme 2 Housing</b>	Action	<b>Responsibility</b>	Timescale	<b>Deliverability issues</b>	Progress
Encourage	Retrofit in owner occupied housing to EPC 'C'	<b>Private Sector Housing Climate Change</b>		BRE Housing Stock Data available for use until March 2021	Signposting and provision of advice to residents on Green Home Grant  Signposting and provision of advice on <a href="#">energy efficiency and renewable technologies</a> provided to residents on an

				to inform targeting	<p>ongoing basis, with up to date information provided on the Council's website, Green Home Grant.</p> <p>The Principal Climate Change &amp; Sustainability Officer and the Energy Support Officer offer a wide range of advice on reducing energy, energy efficiency, renewable energy and decarbonised heating technologies and can refer residents for energy vouchers to help cover energy costs and refer those is energy debt to Citizens Advice.</p> <p>In the past two years alone 123 households have been supported with grant funding secured by the Council, delivering nearly £1 million of insulation/ heating measures.</p>
	Work with Landlord's to see the potential benefit of higher standard lets	<b>Private Sector Housing</b> <b>Climate Change</b>			<a href="#">Information on Landlord responsibility and the implications of the Minimum Energy Efficiency Standards</a> are set out in the Private Sector Housing webpages on the Council's website.
	Energy efficiency improvements to fuel poor/ vulnerable households through grants and loans	<b>Private Sector Housing</b> <b>Climate Change</b>		Dependent on availability of grant funding. Use of PSH Grants/ Loans to top up funding	<p>Up-to-date information on grant funding available to help improve energy efficiency provided via email, telephone or through the <a href="#">Council's website</a>.</p> <p>In the last two years the Council has secured almost £1million funding through successful applications to the ECO 3, Warm Home Fund, Local Authority Delivery Scheme</p>

				to enable 100% free install	<p>(1a,1b and 2), Household Support Fund and UK Shared Prosperity Fund. These funding streams have supported vulnerable households, with heating upgrades, insulation measures and solar pv.</p> <p>(March 2023) DDC is currently awaiting Government confirmation on the outcome of applications to other Energy Efficiency Funding schemes and the contract for the Energy Company Obligation 4 (ECO 4) which will run until 2026 is currently being finalised. £80,000 of the UKSPF funding has been ringfenced to help alleviate energy costs of vulnerable households and improve the energy efficiency of housing stock in the next two years.</p> <p>DDC continues to pursue funding opportunities to improve energy efficient of the least efficient homes in which fuel poor/ vulnerable households.</p>
	Uptake of renewable energy technologies through promotion of successful pilot projects undertaken at a local level	<b>Climate Change</b>		1 <sup>st</sup> round of Solar Together Kent delivered at against a backdrop of COVID 19, (which delayed survey bookings during the winter	<p>4 Properties in the district received fully funded solar pv and battery storage (European Triple A funded project led by KCC).</p> <p>DDC participated in Solar Together Kent Mar 2021 scheme – 23households had solar pv and 2 had batteries installed.</p>



				<p>lockdown; caused cancellations due to installer and customer isolation; and caused global delays to supplies and deliveries), and the impact on personal finance, as well as traditional drop-out causes, such as roofs being unsuitable.</p> <p>2<sup>nd</sup> round of Solar Together demand outstripped scheme capacity. First time this has happened in any Council backed scheme. Energy crisis has vastly increased able to pay householders'</p>	<p>DDC participated in 2<sup>nd</sup> Round of Solar Together Kent scheme– Launched Spring 2022 – completion due end March 2023. As at mid-January 2023 – 91 installs completed.</p> <p>Last year (2022) demand outstripped scheme capacity. First time this has happened in any Council backed scheme. Energy crisis has vastly increased able to pay householders' desire to invest in solar pv. The next round is due to launch this March.</p>
--	--	--	--	--	--

				desire to invest in solar pv.	
Enforce	Take action to enforce minimum energy efficiency standards in private rental sector	<b>Private Sector Housing</b>			
<b>Theme 3 Governance</b>	<b>Action</b>	<b>Responsibility</b>	<b>Timescale</b>	<b>Deliverability issues</b>	<b>Progress</b>
Business Continuity	Flexibility in approach to delivering services, and adapting services	<b>Heads of Service</b>			
Use	Influence to review low carbon solutions across Council operations	<b>CMT</b> <b>Head of Assets &amp; Building Control</b> <b>East Kent Audit Partnership</b>			This is an ongoing objective and ties in with the need to cover these objectives within Service Plans.

	Influence to encourage supply chain to minimize impact on the environment	<b>Procurement Manager</b>  <b>Regeneration Team</b>  <b>Project Managers</b>			<p>Funding opportunities for Businesses are published on the Council's <a href="#">Businesses and Climate Change webpage</a>.</p> <p>DDC signpost SMEs funding opportunities available through <a href="#">signposting to LOCASE</a></p> <p>Kent Procurement Subgroup drafting Kent Wide Market Position Statement for endorsement by Local Authorities. Draft provided May 2022 for Management consideration</p>
	Influence to help SME business to access funds and expertise to help reduce their carbon footprint	<b>Regeneration Team</b>  <b>Business Hub</b>  <b>Climate Change</b>			<p><a href="#">DDC's Businesses and Climate Change pages</a> provide information on opportunities for Businesses to increase their environmental credentials.</p> <p>Green Business Grants provided by the Council has helped 11 businesses to reduce their carbon footprint through contributions towards insulation, double glazing and solar pv. As at beginning of March 2023 a further 6 applications have been submitted for a green energy grant and are being considered by the Council's grants panel. DDC has been recognised for its work in supporting small businesses to renovate, bring back to use, and increase energy efficiency of their premises taking the award for 'Best Programme of Business Support in the Southeast' at the inaugural Federation of Small Businesses (FSB) Local Government Awards. Aylesham and Snowdown Welfare Bowls Cob, Solley's Kentish Ice Cream in Deal, and Algar Lodge Farm Shop are amongst the successful</p>

					<p>applicants to the Councils Green Business Grant. The scheme is now closed.</p> <p><a href="#">Kent REVs Up for Cleaner Air</a> provides businesses with the opportunity to try an electric van. The aim is that organisations will see the benefits and easing of owning an electric vehicle and be encouraged to invest post trial.</p>
<i>Theme 4 Natural Environment</i>	Action	<b>Responsibility</b>	Timescale	<b>Deliverability issues</b>	Progress
Awareness	Increase volunteer/ outreach work to promote the value of the natural environment	<b>White Cliffs Countryside Project</b>	<b>S-M</b>		<p>The White Cliffs Countryside Partnership offers a range of opportunities for volunteers including practical conservation volunteers, site wardens and livestock looking.</p> <p>DDC trialled no mow May in several locations in 2022 to boost the flowers and nectar available for pollinating insects.</p>
	Liaise with community groups/ schools to increase awareness of what we can all do to help	<b>White Cliffs Countryside Project</b>	<b>Ongoing</b>		In support of the Great British Spring clean DDC launched a new <a href="#">Environmental Awards Scheme</a> to recognise unsung heroes who work hard to improve the appearance of the Dover District and help to maintain our environment. Individuals, schools, and

	benefit the environment	<b>Community Engagement Team</b>			<p>groups were recognised for activities that help make our district a clean and greener place to live such as organising litter picks, reducing the amount of paper and plastic they use, recycling, upcycling, and reusing items such as furniture and clothes. Local businesses were judged on initiatives they'd introduced to become more sustainable.</p> <p>DDC won the prestigious <a href="#">Keep Britain Tidy Great British Spring Clean Award</a> in recognition of the promotion, engagement and delivery of the Great British Spring Clean Campaign 2022.</p> <p><a href="#">Spring 2023 announced the second year of its environmental awards scheme, rebranded as REACH (Recognising Environmental And Community Heroes)</a> to recognise the district's unsung heroes who work hard to improve the appearance of the Dover District, help to maintain the environment and unite the local community.</p> <p>DDC provides groups with <a href="#">clean-up kits</a> and advises on how to undertake <a href="#">safe litter picking campaigns</a>.</p> <p>Dover District Council also promotes <a href="#">Great British Beach Clean 2022 (dover.gov.uk)</a> annually to raise awareness about the importance of keeping beaches free from litter.</p>
--	-------------------------	----------------------------------	--	--	--

					<p>The Environmental Protection team conduct educational talks and assemblies with schools or educational establishments on the topics of both litter and dog fouling. These include:</p> <ul style="list-style-type: none"> <li>• The impact litter has on our environment.</li> <li>• The risk to health and wildlife</li> <li>• The cost of clearing it up</li> <li>• The penalties if caught.</li> <li>• Interactive games about biodegrading including covering a teacher with litter if questions were answered correctly.</li> </ul> <p>The team anticipate extending these talks to cover other topics such as air pollution this year (2023)</p>
<b>Theme 5 Waste</b>	<b>Action</b>	<b>Responsibility</b>	<b>Timescale</b>	<b>Deliverability issues</b>	<b>Progress</b>
Inform	Increase education and promotional campaigns on how to reduce waste, reuse and recycle	<b>Waste Services</b>			<p>The Environmental Protection team conduct educational talks and assemblies with schools or educational establishments on the topics of both litter and dog fouling. These include:</p> <ul style="list-style-type: none"> <li>• The impact litter has on our environment.</li> <li>• The risk to health and wildlife</li> </ul>

					<ul style="list-style-type: none"> <li>• The cost of clearing it up</li> <li>• The penalties if caught.</li> <li>• Interactive games about biodegrading including covering a teacher with litter if questions were answered correctly.</li> </ul> <p>The team anticipate extending these talks to cover other topics such as air pollution this year (2023)</p> <p>The Council website pages <a href="https://www.dover.gov.uk/dog-fouling">Dog Fouling (dover.gov.uk)</a> <a href="https://www.dover.gov.uk/business-waste-and-recycling">Business Waste and Recycling (dover.gov.uk)</a> promote action to create a cleaner environment and the penalties for not offenders.</p>
Collaboration	Work with KCC on disposal strategy at waste disposal sites to encourage waste re-purposing, and use of biodegradable waste to generate biogas	<b>Head of Commercial Services</b>			To help reduce confusion about what plastics to recycle DDC in conjunction with all Kent Councils promote the charity, Pledge2Recycle Plastics, <a href="https://www.kent-pledge2recycle.co.uk">Kent - PLEDGE2RECYCLE</a> to educate and advise citizens
	On encouragement/enforcement on	<b>Waste Services</b>			

	appropriate disposal of used products				
	Strengthen intelligence of and penalties for waste crime	<b>Regulatory Services</b>			<p>DDC had a successful bid for funding (£37,815) from DEFRA and the Waste and Resources Action Programme (WRAP) to combat fly tipping in our district. <a href="#">Fly-tipping hotspots cleared up and hidden CCTV installed in Dover (localrags.co.uk)</a>. This included the purchase of covert and overt surveillance equipment and the introduction of planters to fly tipping hotspots to change the way an area feels. This has resulted in the reduction in amount of waste fly tipped in some areas.</p> <p>DDC is part of the Kent Resource Partnership <a href="#">Kent Resource Partnership - Kent County Council</a> they employ an intelligence analyst which collates and shares intelligence to assist investigations into waste crime. This includes partnership working with the police and other LAs across Kent.</p> <p>DDC recently was part of a joint letter with a number of local authorities calling for the sentencing council to issue higher penalties for fly tipping, however this bid was unsuccessful.</p> <p>There is a wealth of Environmental Education information on the following pages:-</p> <p><a href="#">Environmental Education (dover.gov.uk)</a></p> <p><a href="#">Fly Tipping (dover.gov.uk)</a></p>



					<a href="https://www.dover.gov.uk/vehicles-used-for-fly-tipping">Vehicles used for fly tipping (dover.gov.uk)</a> <a href="https://www.dover.gov.uk/littering-from-vehicles">Littering From Vehicles (dover.gov.uk)</a> <a href="https://www.dover.gov.uk/public-spaces-protection-order">Public Spaces Protection Order (dover.gov.uk)</a> <a href="https://www.gov.uk/report-a-smoky-lorry-or-bus">Report a smoky lorry or bus - GOV.UK (www.gov.uk)</a> <a href="https://www.dover.gov.uk/crop-spraying">Crop Spraying (dover.gov.uk)</a> <a href="https://www.dover.gov.uk/statutory-nuisance">Statutory Nuisance (dover.gov.uk)</a> Residents are also able to report breaches and provide information to support enforcement action.
<b>Theme 6 Air Quality</b>	<b>Action</b>	<b>Responsibility</b>	<b>Timescale</b>	<b>Deliverability issues</b>	<b>Progress</b>
Develop	AQ Plan and set out measures that could improve air quality in the district	<b>Regulatory Services</b>			Dover DC is finalising the updated AQ Action Plan to be published for consultation early 2023 – will include measures to improve AQ across the district
	Define areas of poor air quality for action	<b>Regulatory Services</b>			Air Quality Management areas can be found at:- <a href="https://www.dover.gov.uk/aqma-2009-amendment">AQMA-2009-Amendment.pdf (dover.gov.uk)</a>  <a href="https://www.dover.gov.uk/aqma-high-st-ladywell">AQMA-High-St-Ladywell,-Dover.pdf</a>
Collaboration	Work with Kent Highways to implement measures to improve air quality (i.e. Anti-idling,	<b>CCWG</b>			Dover DC works with colleagues across Kent and feeds action and outcomes into the <a href="#">KCC Low Emissions Strategy</a>  Dover District Council is part of the <a href="#">Kent &amp; Medway Air Quality Partnership</a> , supporting all Kent Councils to meet to

	Planting of hedges/ trees to absorb emissions and improve air quality				monitor and take action to address areas of poor air quality.  <a href="#">The Council's webpages</a> also provide advice on what steps residents can take to reduce air pollution.
<b>Theme 7 Local Development Plan</b>	<b>Action</b>	<b>Responsibility</b>	<b>Timescale</b>	<b>Deliverability issues</b>	<b>Progress</b>
Encourage	Sustainable pattern of development supported by a low carbon transport infrastructure	<b>Head of Planning</b>  <b>Joint Transport Board</b>	<b>M, L</b>		The provision of ev charging points/ ev chargepoint infrastructure is considered in all Council build projects (to date 21 ev charging points have been installed in the District and infrastructure for 2 ev charging points is currently being installed at Foxborough Close (Woodnesborough) development.  Proposals for town centre regeneration projects, e.g. the Dover Beacon application to the Levelling Up Fund are located close to sustainable transport connections.
	Encourage renewable sources of energy supply	<b>Regeneration Team</b>  <b>Climate Change</b>	<b>M,L</b>		DDC has participated in and promoted Solar Together Kent scheme that enables residents to group together to buy solar pv and battery storage. The next round is due to launch in Spring 2023.

	A reduction in car use through managing developments in the Local Plan	<b>Head of Planning</b>	<b>M,L</b>		Updates on progress of Local Plan and evidence base available at <a href="http://www.doverdistrictlocalplan.co.uk">www.doverdistrictlocalplan.co.uk</a>
Request	Higher standards of sustainable design in buildings in the District	<b>Head of Planning</b>	<b>M,L</b>		
	Enforcement through Building Regs	<b>Head of Assets &amp; Building Control</b>	<b>Ongoing</b>	Proposed revision to Part L of Building Regs	
	Refresh of Kent Design Guide in partnership with Kent Councils	<b>Head of Planning</b>	<b>S- M</b>		Review underway
<b>Theme 8 Transport</b>	<b>Action</b>	<b>Responsibility</b>	<b>Timescale</b>	<b>Deliverability issues</b>	<b>Progress</b>
Promote	Sustainable travel planning	<b>Visitor Economy and Strategic Tourism Manager</b>	<b>M, L</b>		DDC has been working with operator Stagecoach and Aylesham Parish Council to introduce two <a href="#">Demand Responsive Transport (DRT)</a> minibuses. Residents living in Aylesham and surrounding villages that are not currently served by a regular bus service can reach Whitfield and link to other buses for onward journeys by booking a bus at the touch of a button or phoning

					<p>the operator. Buses will run 7am-7pm Monday to Friday and 9am – 5pm on Saturdays – a single flat fare will cost £3.50.</p> <p>Dover District Leisure Centre’s travel plan, includes the promotion of a monthly free bus pass in 2022 to Dover District Residents using the centre – promoting sustainable travel and emphasis on reducing reliance on single occupancy car journeys.</p> <p>The construction of Dover Fastrack, Kent’s first zero-emission bus route is underway. As the project’s strong focus is on carbon reduction, more than 10,000 new trees, shrubs and hedgerows will be planted to provide enhanced wildlife habitat in the area.</p> <p>Cycle hire available from June 2022 at Dover Castle coach park, Marina Curve and Market Square. Cycles can also be returned to Folkestone cycle hubs as well as those situated in Dover enabling visitors to cycle part of the Cantii Way.</p> <p>DDC webpage <a href="#">‘small travel changes that can make a big difference’</a> promotes sustainable travel.</p> <p>High speed train is advertised on our websites, in our tourism brochure and on our social media sites:</p>
--	--	--	--	--	---

					<ul style="list-style-type: none"> <li>• <a href="https://www.investindover.co.uk/Why-Dover/Connected-for-Business/High-Speed-Train-Service.aspx">https://www.investindover.co.uk/Why-Dover/Connected-for-Business/High-Speed-Train-Service.aspx</a></li> <li>• <a href="https://www.whitecliffscountry.org.uk/staycations-in-white-cliffs-country/sustainable-tourism-in-white-cliffs-country">https://www.whitecliffscountry.org.uk/staycations-in-white-cliffs-country/sustainable-tourism-in-white-cliffs-country</a></li> </ul>
	Focus Visit Dover campaigns on 'green' tourism in the district	<b>Visitor Economy and Strategic Tourism Manager</b>	<b>M, L</b>		The Council promotes sustainable tourism: <a href="https://www.whitecliffscountry.org.uk/staycations-in-white-cliffs-country/sustainable-tourism-in-white-cliffs-country">https://www.whitecliffscountry.org.uk/staycations-in-white-cliffs-country/sustainable-tourism-in-white-cliffs-country</a>
	Actions within Kent Energy & Low Emissions Strategy	<b>Head of Commercial Services</b> <b>Head of Planning</b> <b>Joint Transportation Board</b>	<b>M, L</b>		As part of a 'Schools Group' DDC partner in a successful Defra bid for a 'Digital Schools Resource' led by Canterbury CC to run educational campaigns for schools to promote sustainable/ active travel and improving air quality.  KCC looking to update Local Transport Plan
	Uptake of electric vehicles through changes to licensing of taxis	<b>Head of Regulatory Services</b>	<b>M, L</b>		DDC new Licensing Policy. 4.3.3: Vehicle Specifications enable Electric, Hybrid or LPG converted vehicles to be licensed. This Authority offers a reduction in the licence fee

					<p>for any vehicle that is electric, hybrid or LPG converted of 25%. <a href="https://www.dover.gov.uk/licences-and-permits">Licences and Permits (dover.gov.uk)</a></p> <p><a href="#">The Energy Saving Trust</a> are running a survey on behalf of Kent County Council and district councils in Kent (opens 27 January 2023) which aims to gauge opinions about electric vehicles (EVs) from the taxi and private hire trade. The results will help us understand the barriers they are facing to making this switch. This will help to inform licensing policies and charging infrastructure decisions to support a fair transition to EVs.</p>
--	--	--	--	--	---

Emissions of Concern					
Theme	Action	Responsibility	Timescale	Deliverability issues	Progress
<b>Theme 1 Assets &amp; Estate</b>					
Event/ Policy	Implications of international/ national/ local events that have a consequence of limiting current carbon reduction ambition	<b>ESAG (Event Safety Advisory Group)</b> <b>CMT</b> <b>CCWG</b>	<b>M, L</b>	Increased renewable energy targets, support for nuclear, hydrogen and Carbon capture and storage – long term solutions to near-term problems.	Energy Security Strategy published on 7 April 2022
	Impact on economic prosperity of the district that will inhibit ability to take future action	<b>CMT</b> <b>CCWG</b>	<b>M, L</b>		
	Changes to National Policy reduces level of current Climate Change ambition/ action	<b>CMT</b> <b>CCWG</b>	<b>M, L</b>	Try to influence National Policy through responses to relevant consultations	

	Capacity of existing/ lack of investment in national infrastructure to support different types of energy supply, i.e. decarbonisation of heat	<b>CMT</b>  <b>CCWG</b>	<b>M, L</b>	Try to influence National Policy through responses to relevant consultations	
<b>Theme 2 Housing</b>	<b>Action</b>	<b>Responsibility</b>	<b>Timescale</b>	<b>Deliverability issues</b>	<b>Progress</b>
Funding	Continue to seek and lobby for funding to enable fuel poor households to achieve affordable warmth	<b>Climate Change</b>	<b>M, L</b>		DDC actively pursues funding opportunities – currently awaiting outcome of two funding applications (February 2023)
Advice	Provision of knowledgeable advice on energy, thermal efficiency, new technologies through different communication channels	<b>Climate Change</b>	<b>M, L</b>		Officers provide information to residents via telephone, email or face to face and the Council's website provides up to date information.



					<a href="#">Government website</a> launched providing hints and tips on saving energy and energy efficiency.
	Provide information on changes in behaviour that will reduce our impact on the environment	<b>Climate Change</b> <b>White Cliffs Countryside Project</b> <b>Housing Officers</b> <b>Community Engagement Team</b>	<b>M, L</b>		Officers across the Council provide information relevant to their area of expertise.  Government's recently launched <a href="#">Help for Households webpage</a> provides information on energy saving tips, and nationwide tv advertising campaign launched to help residents change energy usage behaviour.

<b>Theme 3 Governance</b>	<b>Action</b>	<b>Responsibility</b>	<b>Timescale</b>	<b>Deliverability issues</b>	<b>Progress</b>	
	New ways to work	Use lessons learnt from 'lockdown' to move away from business as usual approach to working life	<b>Agile working group</b>	<b>M, L</b>		Hybrid meetings now fully embedded into DDC working practices.  Moving our infrastructure into the cloud
		Use of community and business grants for 'green' initiatives	<b>Regeneration Team</b>	<b>M, L</b>		
<b>Theme 4 Natural Environment</b>	<b>Action</b>	<b>Responsibility</b>	<b>Timescale</b>	<b>Deliverability issues</b>	<b>Progress</b>	
	Action	Be pro-active rather than wait till after the event to react, i.e. work with partners to increase cyclical drain clearance to prevent surface water flooding	<b>Emergency Planning in conjunction with Kent Resilience Forum</b>	<b>M, L</b>		DDC carry out annual drainage surveys and jetting clearance works on all its assets that contain drainage systems to reduce the risk of flooding – these are predominantly found in car parks and parks and open spaces.
		Encourage landowners upstream to develop	<b>Emergency Planning</b>	<b>M, L</b>		DDC work proactively with stakeholders such

	flood prevention measures through natural sources, rather than installation of barriers downstream	<p><b>in conjunction with Kent Resilience Forum</b></p> <p><b>White Cliffs Countryside Project</b></p>			<p>as KCC highways, Internal drainage board and Environment Agency to improve and maintain all of its watercourses and seek opportunities elsewhere to improve flood defences or mitigate the risk of flooding. DDC worked with Southern Water to improve these risks – one great innovative was encouraging residents in high surface water flood risk areas of Deal to use water butts to take the rainwater from roof spaces instead of going into the Southern water or highway drainage systems.</p>
	Encourage better land management to protect what we've got	<b>White Cliffs Countryside Project</b>	<b>M, L</b>		

	Highlight the impact food choices/ production, travel etc has on marine life, soil and the air we breathe	<b>Climate Change</b>	<b>M, L</b>		
<b>Theme 5 Waste</b>	<b>Action</b>	<b>Responsibility</b>	<b>Timescale</b>	<b>Deliverability issues</b>	<b>Progress</b>
Review	Zero Waste Strategy, update and implement	<b>Head of Commercial Services</b>	<b>M, L</b>		
Stimulate	Action to reduce waste through working with Parish Councils, Community Groups etc	<b>Community Engagement Team</b>	<b>M, L</b>		
	Market for resource efficient products through leadership and greener procurement choices	<b>CCWG Procurement Manager</b>	<b>M, L</b>		
	Understanding of food waste hierarchy, i.e. prevent, reuse, recycle	<b>Waste Team Community Engagement Team</b>	<b>M, L</b>		

	Recycling rates in the district where barriers exist currently that prevent recycling, ie. by working with residents in flats	<b>Waste Team</b>	<b>M, L</b>		
<b>Theme 6 Air Quality</b>	<b>Action</b>	<b>Responsibility</b>	<b>Timescale</b>	<b>Deliverability issues</b>	<b>Progress</b>
Partnership	Work with colleagues across the county/ community groups to extend the reach of local authority to achieve 'cleaner air' targets	<b>Head of Regulatory Services</b>	<b>M, L</b>		Together with Medway Council and Kent's 12 district and borough Councils DDC is part of the Kent & Medway Air Quality Partnership. The Partnership support each other to meet legal duties to monitor and take action to address areas of poor air quality. <a href="#">Air quality - Kent County Council</a>

					DDC has worked with the Kent & Medway Air Quality Partnership to develop pollution patrol Home-Pollution Patrol which is an interactive education tool for children, parents and teachers to learn about air quality, its effects and how to reduce air pollution. The Environmental Protection team plan to do some promotional work on this in 2023.
	Smart connectivity and mobility modal shift plan, linking to sustainable transport,	<b>Regeneration Team</b>	<b>M, L</b>		

	transport innovations, active travel, virtual working and digital behaviour change				
<b>Theme 7 Local Development Plan</b>	<b>Action</b>	<b>Responsibility</b>	<b>Timescale</b>	<b>Deliverability issues</b>	<b>Progress</b>
Lobby	Government to require all new homes to be carbon neutral as soon as possible	<b>Head of Planning</b> <b>Head of Assets &amp; Building Control</b>	<b>M, L</b>	<b>Dependent on Government policy and timescales</b>	If Government introduce as National requirement will remove from the Local Plan as superseded.
	For urgent update of National Planning Policy to minimize carbon emissions	<b>CCWG</b>	<b>M, L</b>		
	For reversal of urban sprawl, bring back to sustainable local living	<b>CCWG</b>	<b>M, L</b>	<b>Will be dependent on Government's levels of house buildings in the district.</b>  <b>Constraints of viability and deliverability will</b>	Local Plan – Distribution of development strategy

<i>Theme 8 Transport</i>	<b>Action</b>	<b>Responsibility</b>	<b>Timescale</b>	<b>Deliverability issues</b>	<b>Progress</b>
				restrict DDC's ability to contain urban sprawl	
Collaboration	Through Quality Bus Partnership to work together towards the improvement of bus travel in Dover District	<b>Joint Transportation Board</b>	<b>M, L</b>		£2 single bus fare scheme launched January 2023 – deadline extended until June 2023.
	Work with KCC to improve the facilities for cycling and walking within Dover District and update Dover District Cycling Plan	<b>Joint Transportation Board</b> <b>Visitor Economy and Strategic Tourism Manager</b>	<b>M, L</b>		If the Dover Beacon project bid to LUF is successful, that will enable expansion of the Click to Cycle scheme.  Signage promoting Deal/ Walmer seafront cycle path has been refurbished.
	On continuance of Bus Rapid Transit process	<b>Strategic Project Lead Officer (Infrastructure)</b>	<b>M, L</b>		DDC continues to work closely with KCC on delivering the Dover Fastrack scheme.



